

Full rotary offering

With the addition of Prima Endo, Prima Dental now benefits from a full rotary portfolio. This means distributors can manage a single supplier relationship and enjoy the high standard of service and products synonymous with Prima Dental.

An easy transfer – No new equipment or training required

Prima Endo files outperform the market leader however they can be used in the same hand pieces and in the same way as the market leader. This means that dentists can transfer to Prima Endo files without any further investment in equipment or training.

Autoclavable Packaging

Prima Endo products are sold in unique, autoclavable clam packs. A fast and practical solution for ultra clean packaging, offering perfect steam penetration.



Assorted packs available

“When using the instruments I was impressed not only by their high flexibility and resistance, but how they produce root canal preparations with extreme safety and shape maintenance.”

Dr Daniel deAlmeida Decurcio (DDS, MSc, PhD)

Endodontic Procedure Kits



Prima Endodontic Access

FIG NO.	152	151	PR-2T	FG4 SURG	164	164	164	165	165L
DIAMETER (1/10 MM)	016	016	012	014	010	014	018	014	014
H/LENGTH (MM)	9.0	11.0	4.0	1.4	10.0	10.0	10.0	9.0	9.0
OVERALL LENGTH (MM)	23.0	23.0	19.0	25.0	21.0	21.0	21.0	21.0	25.0

Contains all the burs needed for initial endodontic access through dentine, metal, and porcelain.



Zirconia Diamonds

FIG NO.	801	807	856	368
DIAMETER (1/10 MM)	018	018	018	023
H/LENGTH (MM)	1.8	5.0	9.0	5.0
MEDIUM	•	•	•	•
FINE	•	•	•	•

Combination of Prima Illume Zirconia polishers and Predator® Zirconia diamond burs makes this kit ideal for cutting through as well as adjusting and polishing tough Zirconia restorations.

Prima Dental
Stephenson Drive, Gloucester,
GL2 2HA, United Kingdom

T +44 1452 729751
E sales@primaendo.com
W www.primaendo.com




Our new Prima Endo files range is a better fit for distributors, endodontists, dentists and patients alike.

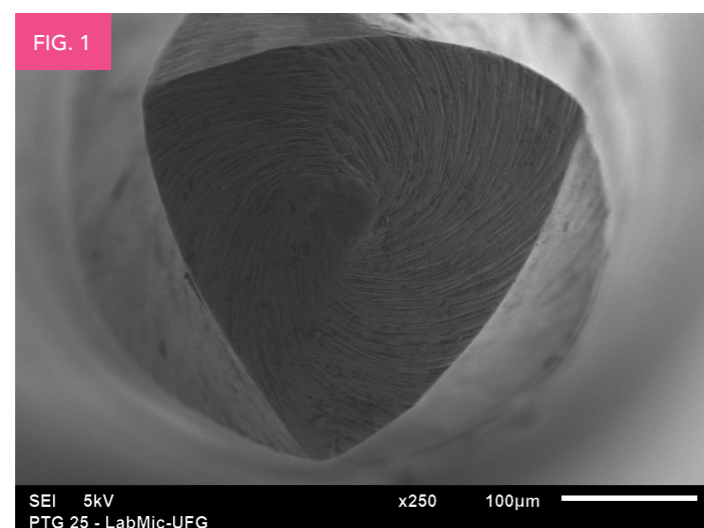
Featuring a convex triangular cross-section, the **Prima Taper** and **Prima Taper Gold** series benefit from progressively tapered designs which clinically serves to **improve flexibility, cutting efficiency** and **reduces the number of recapitulations**.

With increased safety from advanced alloy technology and **no additional training** or **equipment** required for these files, our ranges out perform the market leader in the 3 main area of **cyclic fatigue, torsional fracture** and **flexibility**.

Prima Taper – Continuous NiTi Rotary Files




	SX	S1	S2	F1	F2	F3	F4	F5
FILE LENGTH 19MM	•							
FILE LENGTH 21MM		•	•	•	•	•	•	•
FILE LENGTH 25MM		•	•	•	•	•	•	•
FILE LENGTH 31MM		•	•	•	•	•	•	•
TIP DIAMETER (MM)	0.19	0.17	0.2	0.2	0.25	0.3	0.4	0.5
TAPER AT TIP %	5%	4%	5%	8%	10%	11%	6%	5%



Convex design improves torsional loads, file fatigues and breakages. Applicable for both **Prima Taper** and **Prima Taper Gold**.

Prima Taper Gold – Heat treated NiTi Files

Prima Taper Gold is the next evolution in continuous rotary files. Our files ensure a better shape and provide a smoother finish. Intelligent alloys and superior memory control means lower risk if fracture due to fatigue, flexural or torsional fracture.



	SX	S1	S2	F1	F2	F3	F4	F5
FILE LENGTH 19MM	•							
FILE LENGTH 21MM		•	•	•	•	•	•	•
FILE LENGTH 25MM		•	•	•	•	•	•	•
FILE LENGTH 31MM		•	•	•	•	•	•	•
TIP DIAMETER (MM)	0.19	0.17	0.2	0.2	0.25	0.3	0.4	0.5
TAPER AT TIP %	5%	4%	5%	8%	10%	11%	6%	5%

Available in packs of 6. Assorted pack of 6 (SX, S1, S2, F1, F2, F3)

Superior strength and lasts longer - due to 2 times higher **cyclic fatigue** compared to market leader.


Increased resistance to **torsional fracture** compared to market leader.

Heat-treated NiTi gives increased **flexibility** compared to market leader.

2x 2x 60%

Prima One Gold – Reciprocating NiTi Rotary Files

Suitable for canals of all shapes and sizes, this range benefits from unparalleled safety whilst also shortening the shaping time.



	SMALL	PRIMARY	MEDIUM	LARGE
FILE LENGTH 21MM	•	•	•	•
FILE LENGTH 25MM	•	•	•	•
FILE LENGTH 31MM	•	•	•	•
TIP DIAMETER (MM)	0.20	0.25	0.35	0.45
TAPER AT TIP %	7%	7%	6%	5%

Available in packs of 3. Assorted pack of 4 (PR, LR, SM, ME)

Exceptional strength and lasts longer - due to 5 times higher **cyclic fatigue** compared to market leader.

Increased resistance to **torsional fracture** compared to market leader.

Superior flexibility – 90 degree flex allows for exemplary preparation of the canal.

5x 2x 90°



Cyclic Fatigue: File cyclic fatigue is the result of any repetitive stress that occurs, predominantly during flexion, while rotating around a canal curvature. **Torsional fatigue test** - Torsion is the axial force of being twisted when one part of a file rotates at a different rate than another part. **Flexibility** as per ISO 3630.1 Stiffness test.